

Firgrove
HEATH

You Said... We Listened...

Homes

We have reduced the maximum number of homes on the site from 400 to 300.

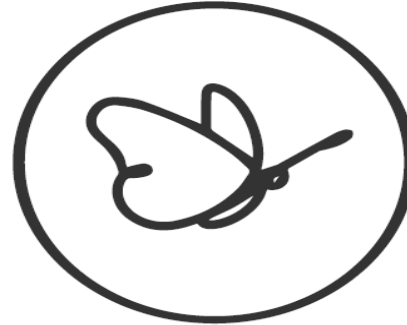
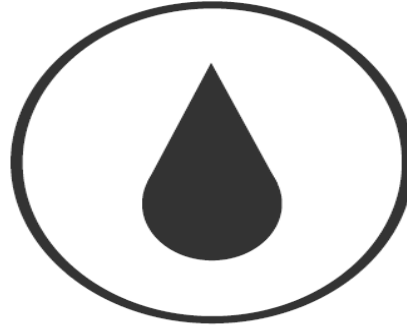


Greenspace

Our proposals open up the equivalent of 20 football pitches of green space to the public.

Flooding

We have revised our drainage strategy to ensure no greater risk to the surrounding area than the current situation.



Wildlife

Our Country Park will help reduce footfall within Castle Bottom Nature Reserve to protect and enhance local wildlife.

Site Location



Our Proposals Site Layout

300
High-quality
bespoke new
homes



Our Proposals Character Areas

-  **Formal Arrival**
-  **Village Street**
-  **Woodland Edge**
-  **Hedge Frontage**



Our Proposals

Formal Arrival & Village Street



Our Proposals Hedge & Woodland Edge



Our Proposals Play Strategy

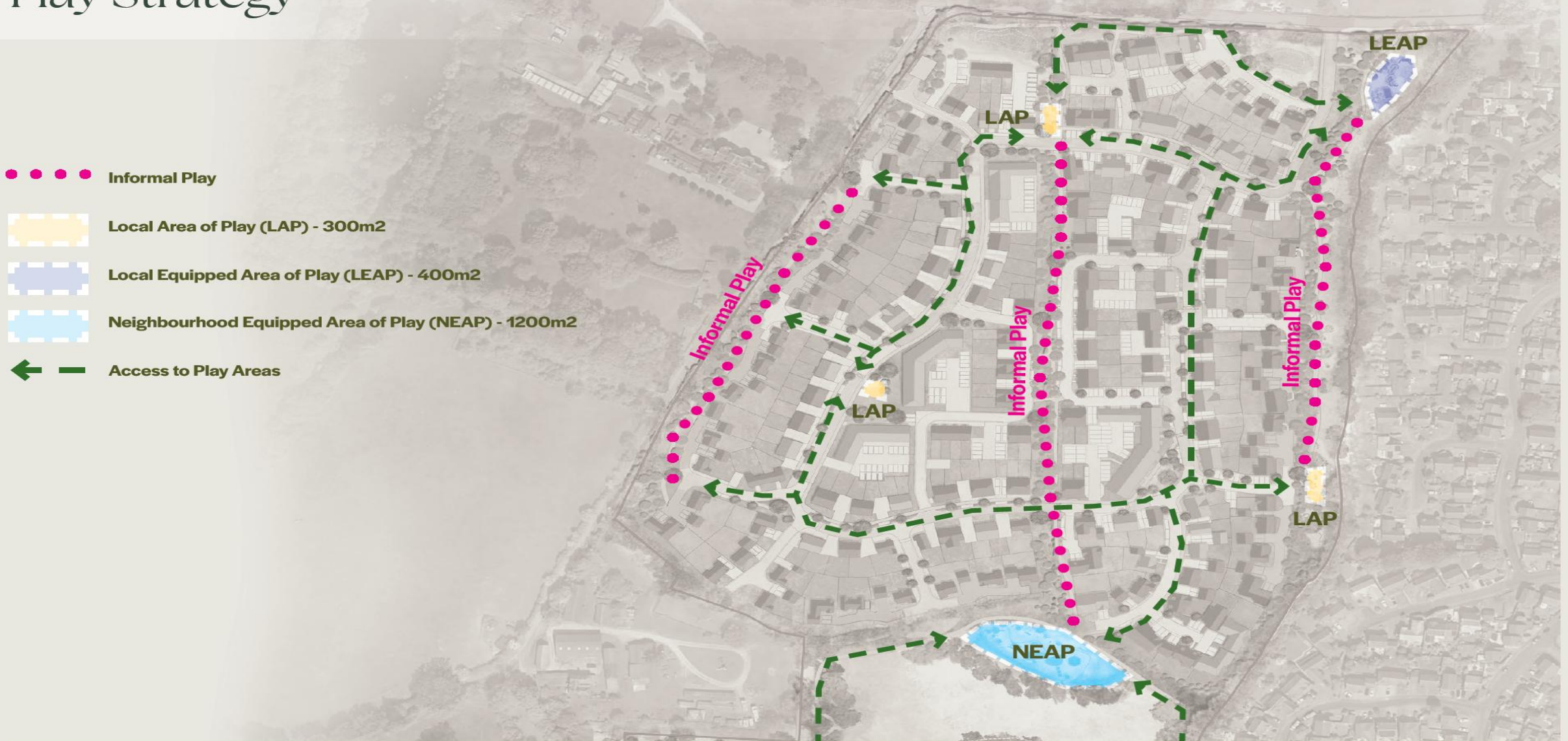
●●●● Informal Play

Local Area of Play (LAP) - 300m²

Local Equipped Area of Play (LEAP) - 400m²

Neighbourhood Equipped Area of Play (NEAP) - 1200m²

← Access to Play Areas



Our Proposals Play Areas

Informal Play



Formal Play



Our Proposals Country Park

10Ha

Country park
open to the local
community

20

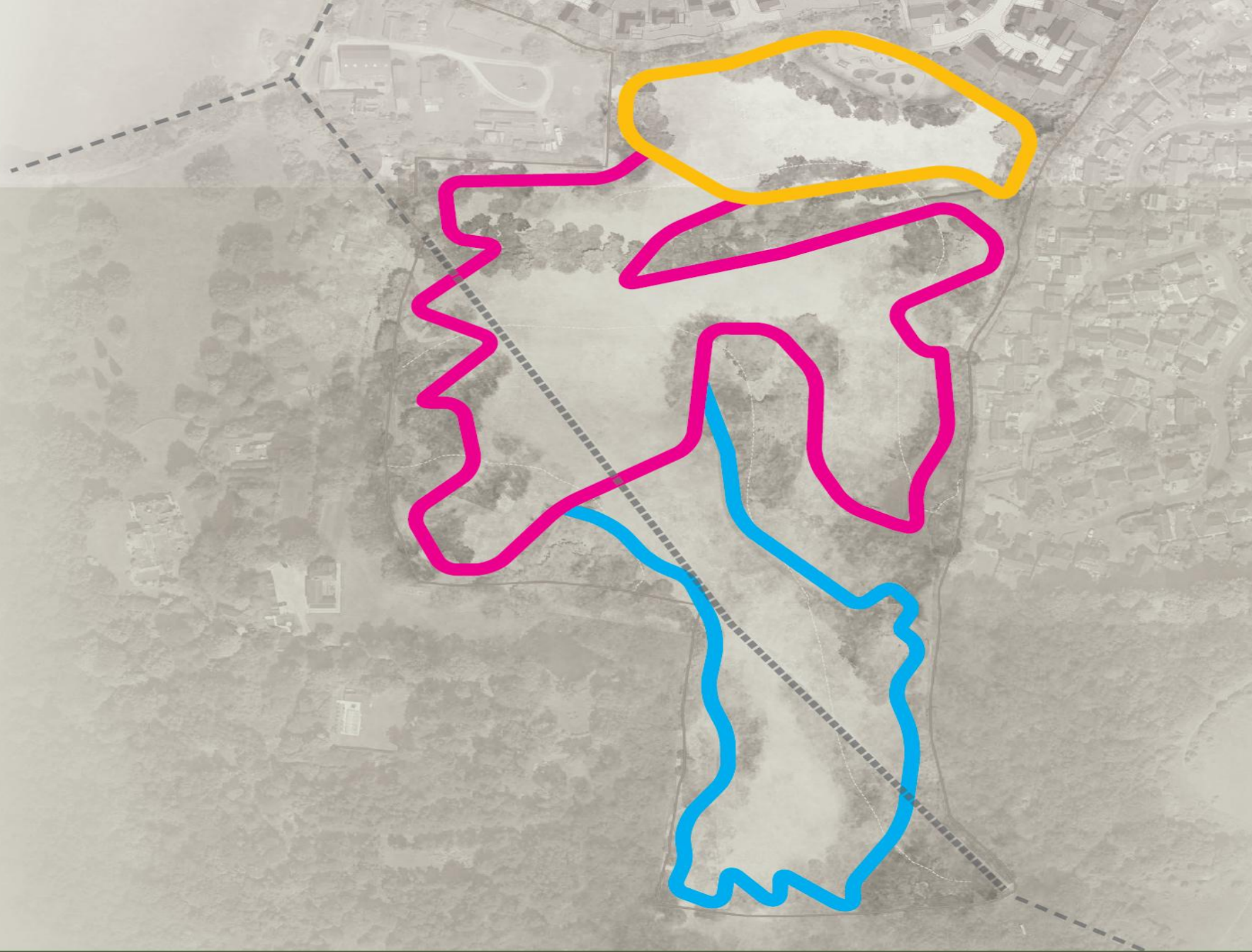
Equivalent
number of
football pitches



Our Proposals Country Park

73%
Larger than
Natural England
requirements

2.3km
Walking loop
made up of
smaller trails



Our Proposals Country Park



Our Proposals

Delivering Real Benefits

New high quality homes



Uniquely designed homes reflecting the architectural vernacular of the area.



Helping housing need and contributing to the shortfall in the District.



300 high-quality bespoke homes ranging from 1-bed apartments to 5-bed homes.

A new place for nature to thrive



Delivering over 60% of open space including a beautiful new country park.



Providing a biodiversity net gain alongside enhanced habitat creation throughout the site.



A long term view ensuring that the management and stewardship play an active role in the wider community.

Contributions to the local economy



£106 contributions to enhance the local infrastructure and support to key community groups.



5% of our workforce in 'earn and learn' roles including education, continued training and apprenticeships.



Creation of 1500 new jobs throughout the construction phase in the local area.

Low carbon development



Implementing features like air-source heat pumps to help with a reduction in our carbon emissions.



Reduction of water consumption by 20 litres per person per day compared to the guidance under Regulations.



Inclusion of solar panels promoting and encouraging the use of renewable energy sources.

Improved Sustainable Travel



Provision of foot/cycleways throughout the development alongside enhanced pedestrian routes on Firgrove Road.



Car charging facilities and secure cycle storage for each home.



Creation of new pathways through the designated country park for all to use and enjoy.